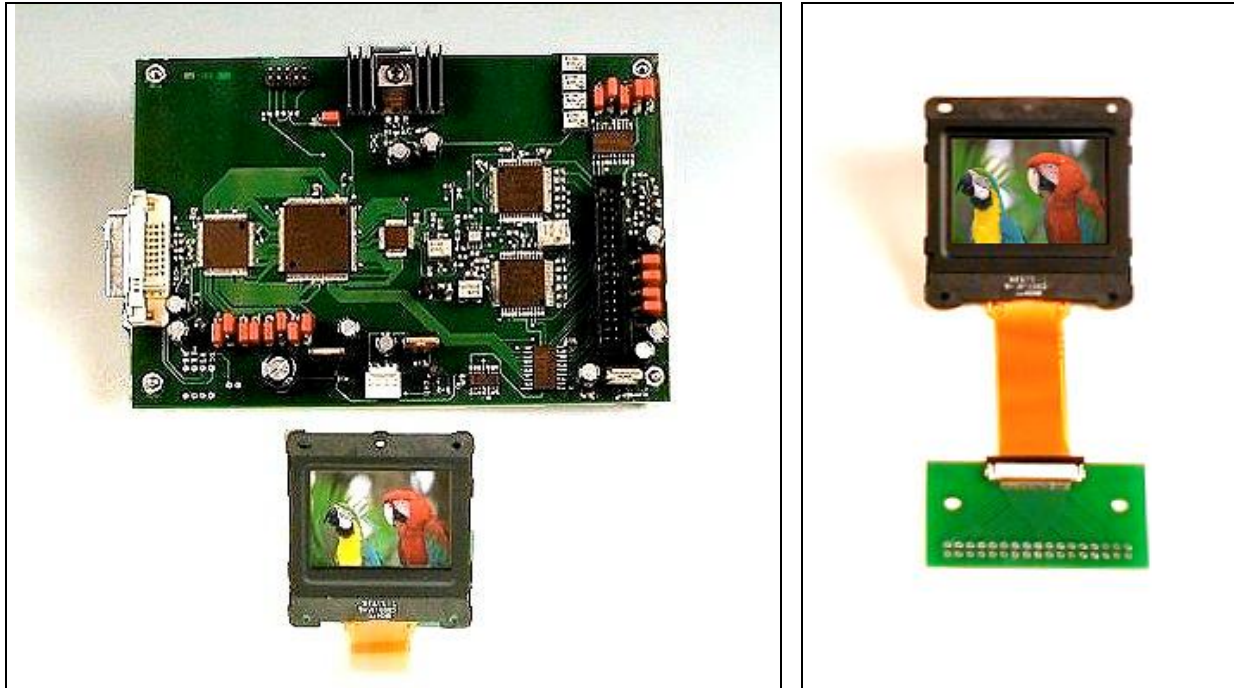




bbs bild- u. lichtsysteme GmbH
 D - 83684 Tegernsee Riedersteinstrasse 30
 Telefax: (49)8022-24648 Telefon: (49)8022-6445
www.bbs-bildsysteme.com info@bbs-bildsysteme.com

LCD-Interface 12 bit digital



INTERFACE for SONY b/w LCD-panel LCX017 and LCX028


specifications

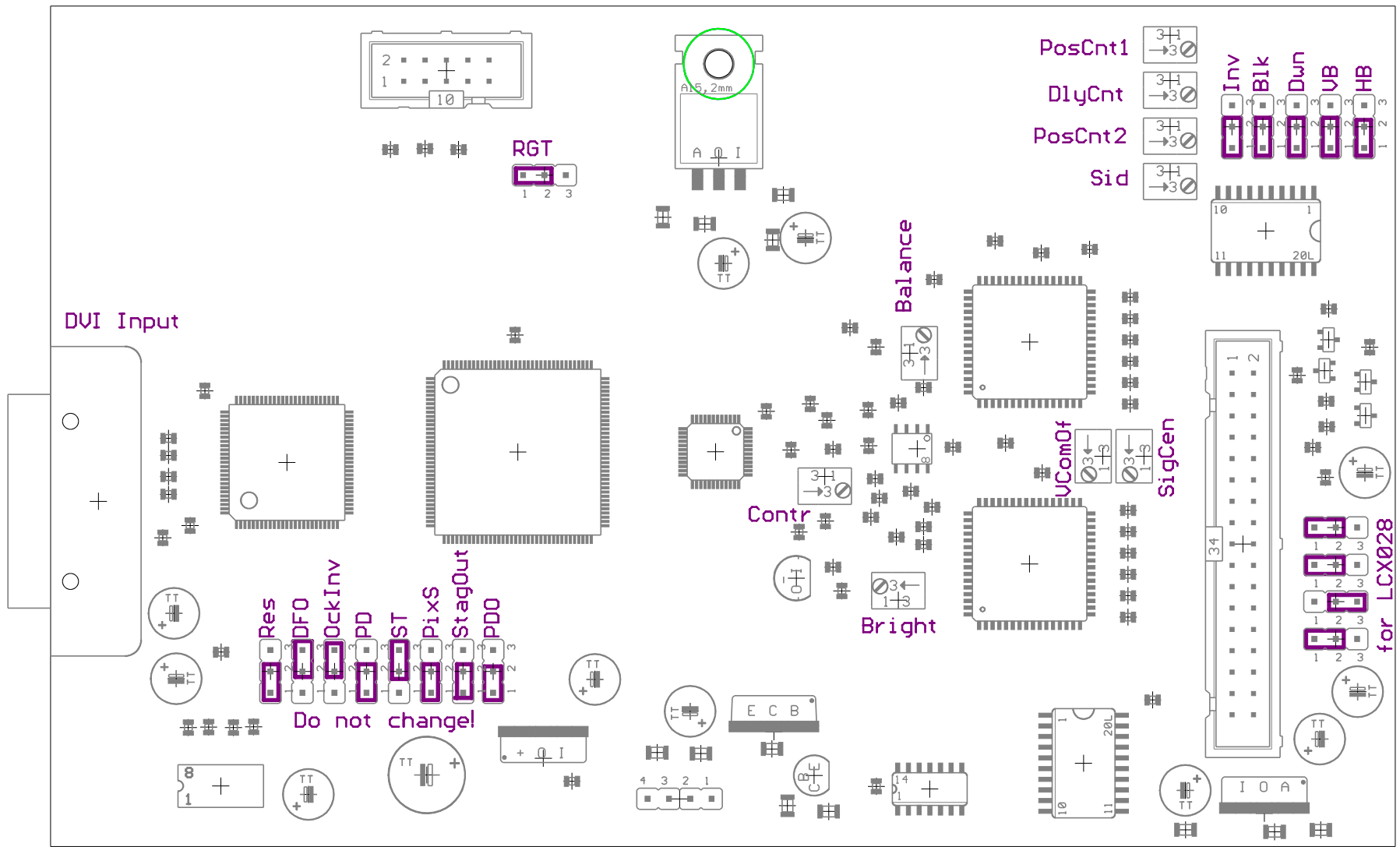
video signal	1024 x 768 or alternative 1280 x 1024 from DVI socket
Power supply	+ 5V, stabilised, 0,7A / +20V, 0,3A
offset necessary:	for exposing photographic paper to compensate panel shading
dimensions interface	160 x 100 mm
dimensions flexible circuit adapter	38 x 50 mm

interface calibration:

mirror, left + right, up + down	jumper
LCX017/LCX028	jumper
contrast	poti
brightness	poti

POLARIZER for SONY b/w LCD-Panel LCX017 and LCX028

	polarizer standard:	floatglas 1,0 mm, 1-side anti reflection coating
	polarizer wide angle: for wide angle compensation	floatglas 1,1 mm, 1-side anti reflection coating



+20V
GND
+5V
GND

Only adjust Contast Brightness and Sid

Description of trimmers for LCX017/LCX028.

There are only five pots the user should change:

Contrast, Brightness, Balance, SID and VCOM

The RGT Jumper does left-right mirroring

The Dwn Jumper does up-down mirroring

If you need mirroring it is recommended to use the Dwn Jumper !

All other Jumpers should not be changed

Contrast	Adjusts contrast.
Bright	Adjusts brightness.
Balance	Balances even and odd columns. Has to be readjusted after strong change of brightness
CAL	Level for the ICs selfadjust do not change!
Delay	Adjusts the sampling time.
SID	Prechargesignal minimises the lines repeating every 12 pixels.
VCOM	Adjusts the backplane voltage against the videosignal. Has to be set so that pixelflicker is minimised.
SigCenter	Adjusts the center voltage of the video signals. do not change.

Bit assignment 12bit digital LCD controller:

12bit	RGB
11(msb)	B7
10	B6
9	B5
8	B4
7	G7
6	G6
5	G5
4	G4
3	R7
2	R6
1	R5
0(lsb)	R4