



bbs bild- u. lichtsysteme GmbH

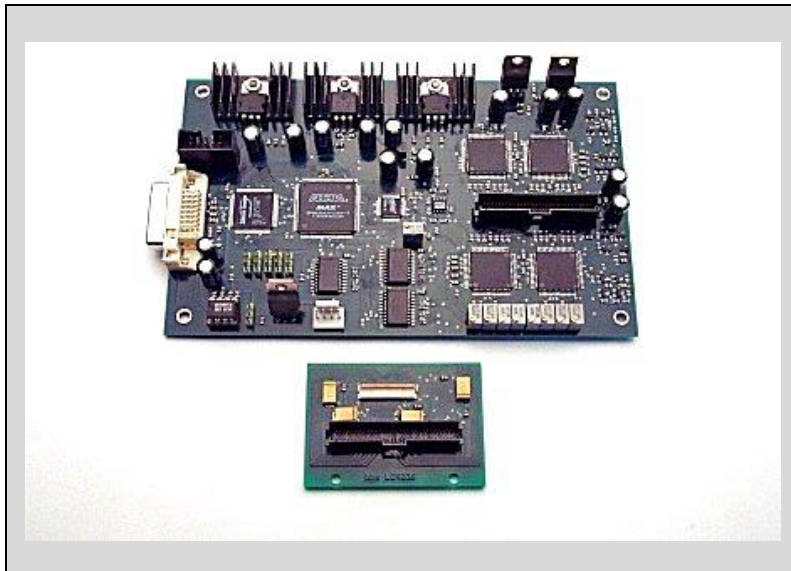
D - 83684 Tegernsee Riedersteinstrasse 30

Telefax: (49)8022-24648 Telefon: (49)8022-6445

www.bbs-bildsysteme.com bbs-bildsysteme@t-online.de

LCD-Controller DVI12 bit digital

1600 x 1200 pixels



Controller for **SONY b/w LCD-panel LCX036**

specifications

video signal from DVI socket	1600 x 1200 pixel
Power supply	+ 5V, stabilized, 0,7A / +20V, 0,5A
offset	for exposing photographic paper to compensate panel shading
simulated delay line	for dot-line-inverse driving
dimensions controller	160 x 100 mm
dimensions flexible circuit adapter	42 x 50 mm

controller calibration:

mirror: left + right
mirror: up + down
contrast
brightness

Polarizer for **SONY b/w LCD-Panel LCX017 and LCX028**

	<u>polarizer standard:</u>	Floatglas 1,0 mm, 1-side anti reflection coating
	<u>polarizer wide angle:</u> for wide angle compensation	Floatglas 1,1 mm, 1-side anti reflection coating

applications: Photo Printers, Data Projection, Holography

Description of trimmers for LCX036.

Contrast	Adjusts contrast.
Bright	Adjusts brightness.
Balance	Balances even and odd columns. Has to be readjusted after strong change of brightness
CAL	Level for the ICs selfadjust. <u>Do not change!</u>
Delay	Adjusts the sampling time.
SID1	Precharge signal, no visible change on the LCD. <u>Do not change!</u>
SID2	Precharge signal minimises the lines repeating every 24 pixels.
VCOM	Adjusts the backplane voltage against the videosignal. Has to be set that pixel flicker is minimised.
SigCenter	Adjusts the center voltage of the video signals. <u>Do not change!</u>

Bit assignment 12bit digital LCD controller:

12bit	RGB
11(msb)	B7
10	B6
9	B5
8	B4
7	G7
6	G6
5	G5
4	G4
3	R7
2	R6
1	R5
0(lsb)	R4