

# EPSON LCD L3C07U-85G10

1920 x 1080 pixels (HDTV) 0,74"  
runs up to 3 panels

Epson HDTV panel + adapter board + polarizer



## Specifications:

<b>video signal</b> from DVI socket	1920 x 1080 pixel (EPSON L3C07U-85G10) 0,74"
<b>power supply</b>	+ 5V (+/- 3%), stabilised, 0,7A +20V (19-25V), stabilized, 0,5A
<b>Photo software available</b>	necessary for exposing photographic paper to compensate panel shading and gradation.
<b>dimensions</b> controller	134 x 128 mm
<b>dimensions</b> flexible circuit adapter	66 x 45 mm
<b>Settings</b> (by software)	<b>mirror:</b> left + right
	<b>mirror:</b> up + down

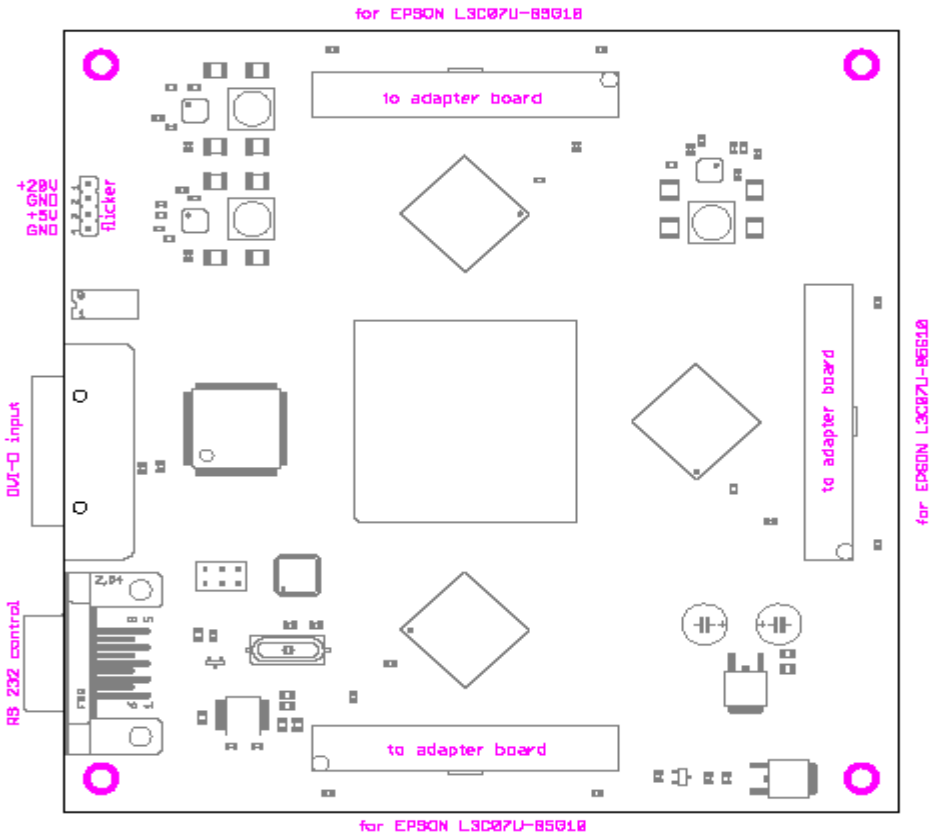
## Bit assignment: 12 bit digital LCD Controller

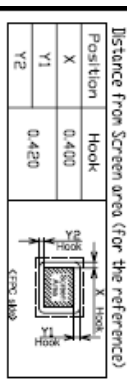
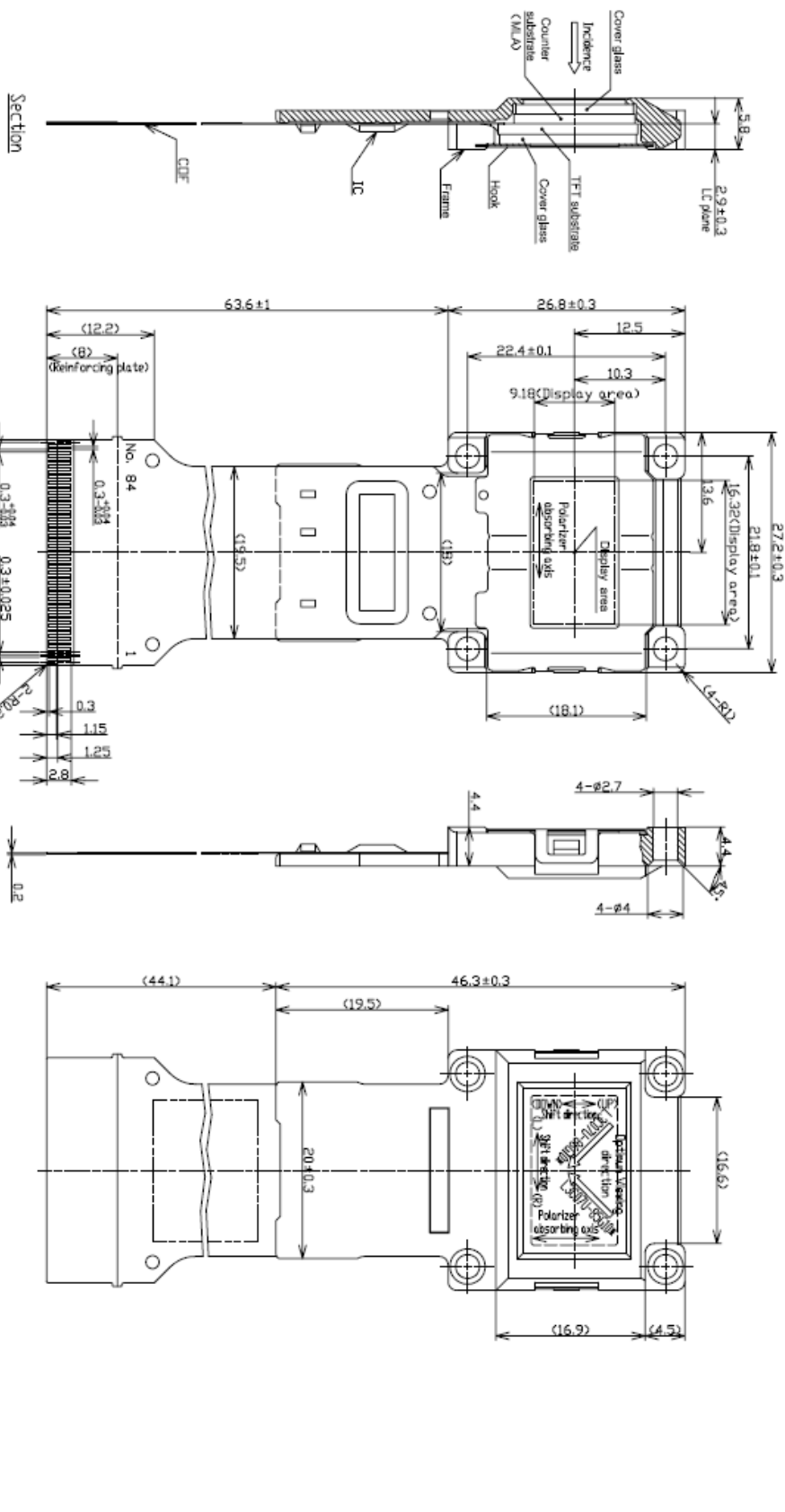
<b>12bit</b>	11(msb)	10	9	8	7	6	5	4	3	2	1	0(lsb)
<b>RGB</b>	G7	G6	G5	G4	G3	G2	G1	G0	B7	B6	B5	B4

# Adjustment Software



# Board Layout with connectors





No.	Terminal	No.	Terminal	No.	Terminal	No.	Terminal	No.	Terminal	No.	Terminal	No.	Terminal	No.	Terminal	No.	Terminal
1	LCCDM	11	Vref17	21	SCLK	31	LV6N	41	LV6P	51	VSS*	61	LV6N	71	TEST1	81	VDDH
2	VDDY	12	Vref16	22	SDATA	32	LV9P	42	VSS*	52	LV3N	62	LV0P	72	Vref9	82	Dummy
3	Dummy	13	Vref15	23	SCS	33	VSS*	43	CLKP	53	LV3P	63	VSS	73	Vref8	83	VSSH
4	VSSY	14	Vref14	24	VSS	34	LV8N	44	CLKP	54	VSS*	64	Dummy	74	Vref7	84	LCCDM
5	VSSH	15	Vref13	25	LV1N	35	LVBP	45	VSS*	55	LV2N	65	VDD	75	Vref6		
6	Dummy	16	Vref12	26	LV1P	36	VSS*	46	LV2P	56	FDP	66	FDP	76	Vref5		
7	VDDH	17	Vref11	27	VSS*	37	LV7N	47	LVSP	57	VSS*	67	MSEL	77	Vref4		
8	VCDM	18	Vref10	28	LV10N	38	LV7P	48	VSS*	58	LV1N	68	HSYNC	78	Vref3		
9	Vref10m	19	ENBY12	29	LV10P	39	VSS*	49	LV4N	59	LV1P	69	VSINC	79	Vref2		
10	Vref18	20	ENBY11	30	VSS*	40	LV6N	50	LV4P	60	VSS*	70	XRESET	80	Vref1		

NOTE

1. Parenthetic values are for the reference.

2. Compatible Connectors

DDK, FF22C-084B-R13A

SMK, CFP7584-1601F

PRODUCT NAME		LCD Panel Module	
PRODUCT NUMBER		L3007U-85G10*	
NOTE		L3007U-86G10*	
TOLERANCE		±0.2	UNIT
DATE		27 July 2007	REVISION
SCALE		1=1mm	2:1
SEIKO EPSON CORPORATION			